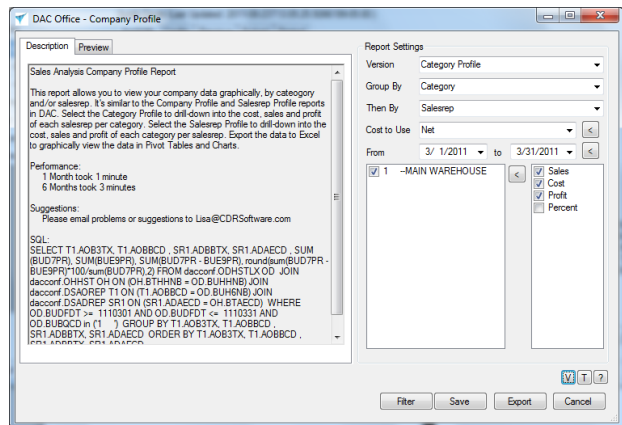


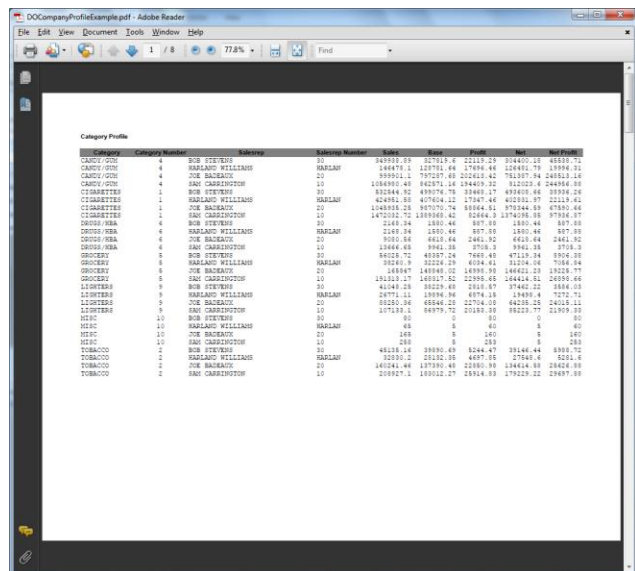
Overview

The Company Profile report is a multi-tab Excel spreadsheet that displays sales data in pivot table and various pivot charts. Select the Category Profile to see sales broken down by Category and then by Sales rep. Select the Salesrep Profile to see sales broken down by Sales rep and then Category. Click on the "<" buttons to pull data from the Global Filter. Click on the Filter button to change your global options. Click the Export button to create the report.



The Data Tab

The data is displayed on the data tab of the multi-tab spreadsheet. A pivot table and several pivot charts are automatically created for you.



Pivot Charts

A chart is created for each checked box on the user interface screen: Sales, Cost, Profit and or Percent. If cost to use is "Base and Net" then both base cost and net cost pivot charts will be created as well as base and net profit pivot charts.

